



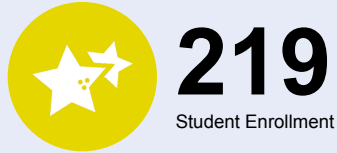
OREGON AT-A-GLANCE SCHOOL PROFILE

Pendleton Early Learning Center

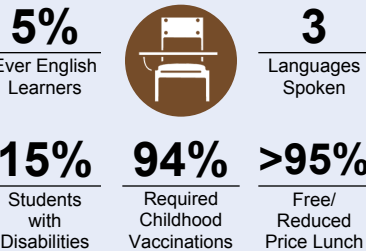
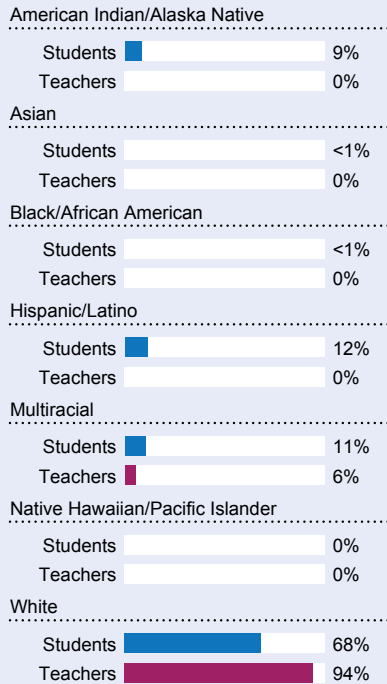
PRINCIPAL: Lori Hale | GRADES: K-K | 455 SW 13th St, Pendleton 97801 | 541-966-3300

2020-21

Students We Serve



DEMOGRAPHICS



*<10 students or data unavailable

Special Note

The At-A-Glance School and District profiles tell a story about Oregon's schools and districts. The story is harder to tell this year as the COVID-19 pandemic significantly impacted our schools and the data we collect. As a result, statewide assessment and attendance data cannot be compared to prior years and are not shown here. We have included links to our website where you can view the 2020-21 statewide assessment and attendance data and read a detailed description of how these data were impacted. We're thankful for your partnership as we focus on care, connection and the creation of safe, inclusive and supportive learning environments.

Academic Success

ENGLISH LANGUAGE ARTS

Students meeting state grade-level expectations.

For 2020-21 English Language Arts data please visit:

www.oregon.gov/ode/schools-and-districts/reportcards/reportcards/Pages/Statewide-Assessment-Results-2021.aspx

School Environment

REGULAR ATTENDERS

Students who attended more than 90% of their enrolled school days.

For 2020-21 Regular Attenders data please visit:

www.oregon.gov/ode/schools-and-districts/reportcards/reportcards/Pages/Regular-Attenders-2021.aspx

MATHEMATICS

Students meeting state grade-level expectations.

For 2020-21 Mathematics data please visit:

www.oregon.gov/ode/schools-and-districts/reportcards/reportcards/Pages/Statewide-Assessment-Results-2021.aspx

Academic Progress

INDIVIDUAL STUDENT PROGRESS

Year-to-year progress in English language arts and mathematics.

Data not available in 2020-21

SCIENCE

Students meeting state grade-level expectations.

For 2020-21 Science data please visit:

www.oregon.gov/ode/schools-and-districts/reportcards/reportcards/Pages/Statewide-Assessment-Results-2021.aspx

School Goals

Our school has a goal to improve student attendance through improving our relationships with students and their families. In addition, we have a goal around the pursuit of instructional excellence. Specifically we are focused on providing targeted instruction in reading and math that will meet the needs each student. We will also continue to strive to meet the ever-changing physical, social, and mental health needs of all our students, implementing Conscious Discipline in their classrooms to enable students to be ready to learn. Our teachers collaborate and use kindergarten readiness screening data to direct their instruction.

State Goals

The Oregon Department of Education is partnering with school districts and local communities to ensure a 90% on-time, four year graduation rate by 2025. To progress toward this goal, the state will prioritize efforts to improve attendance, provide a well-rounded education, invest in implementing culturally responsive practices, and promote continuous improvement to close opportunity and achievement gaps for historically and currently underserved students.

Safe & Welcoming Environment

Our school strives to ensure all students and their parents feel welcome by being greeted by a warm friendly office staff. We keep our school clean and our customer service at the top of our priority list. Our school is also equipped with modern safety features which help us keep our students and staff safe each and every day.



OREGON AT-A-GLANCE SCHOOL PROFILE CONTINUED

Pendleton Early Learning Center

Outcomes

Our Staff (rounded FTE)



14

Teachers



9

Educational
assistants



1

Counselors/
Psychologists



88%

Average teacher
retention rate



80%

% of licensed teachers
with more than 3 years
of experience



Yes

Same principal in
the last 3 years

	REGULAR ATTENDERS	ENGLISH LANGUAGE ARTS	MATHEMATICS
American Indian/Alaska Native			
Asian			
Black/African American			
Hispanic/Latino			
Multiracial			
Native Hawaiian/Pacific Islander			
White			
Free/Reduced Price Lunch			
Ever English Learner			
Students with Disabilities			
Migrant			
Homeless			
Talented and Gifted			
Female			
Male			
Non-Binary			

About Our School

BULLYING, HARASSMENT, AND SAFETY POLICIES

To ensure a safe and secure learning environment for all of our students, our school child development specialist provides lessons to students and staff about recognizing, addressing, and preventing bullying and harassment behavior. We also have the SafeOregon anonymous reporting line/email available to students and parents which can be found on our school website.

Our staff continually work with students and parents on a case-by-case basis to address conflict between students and to provide counseling to learn how to respectfully treat others.

EXTRACURRICULAR ACTIVITIES

Our school offers several extracurricular activities:

- Partnership with community for local athletic, art and cultural programs
- Family enrichment nights
- Literacy nights

PARENT ENGAGEMENT

Our school strives to engage all of our parents by providing language supports for parents where English is their second language. Our school holds a yearly Native American Pow Wow as well as a two literacy nights where parents are welcome to attend. In addition, we will be offering a Conscious Discipline parent night. We also have many parent volunteers who assist teachers in their classrooms on a daily basis.

COMMUNITY ENGAGEMENT

We partner with the local community to provide students with learning opportunities:

- Tours with Oregon Department of Fish and Wildlife
- Community Helpers/Occupation as Classroom Guests and Speakers
- Confederated Tribes of the Umatilla Indian Reservation Heritage Language Program

Each year we hold our winter coat drive as well as an annual food drive to connect our students and community by working together to provide for families in need. We have community volunteers who assist on a weekly basis.