



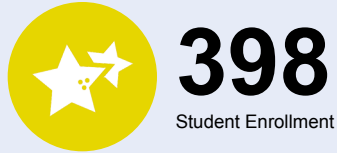
# OREGON AT-A-GLANCE SCHOOL PROFILE

## Washington Elementary School

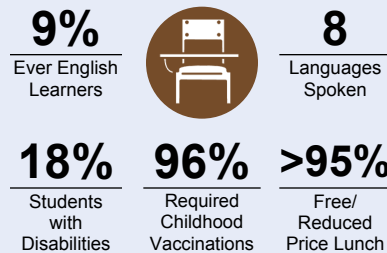
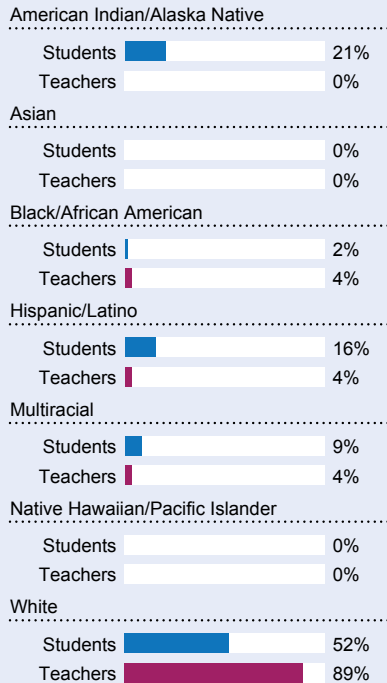


PRINCIPAL: Aimee VanNice | GRADES: K-5 | 1205 SE Byers Ave, Pendleton 97801 | 541-966-5552

### Students We Serve



### DEMOGRAPHICS



\*<10 students or data unavailable

### Special Note

The At-A-Glance School and District profiles tell a story about Oregon's schools and districts. The story is harder to tell this year as the COVID-19 pandemic significantly impacted our schools and the data we collect. As a result, statewide assessment and attendance data cannot be compared to prior years and are not shown here. We have included links to our website where you can view the 2020-21 statewide assessment and attendance data and read a detailed description of how these data were impacted. We're thankful for your partnership as we focus on care, connection and the creation of safe, inclusive and supportive learning environments.

### Academic Success

#### ENGLISH LANGUAGE ARTS

Students meeting state grade-level expectations.

For 2020-21 English Language Arts data please visit:

[www.oregon.gov/ode/schools-and-districts/reportcards/reportcards/Pages/Statewide-Assessment-Results-2021.aspx](http://www.oregon.gov/ode/schools-and-districts/reportcards/reportcards/Pages/Statewide-Assessment-Results-2021.aspx)

### School Environment

#### REGULAR ATTENDERS

Students who attended more than 90% of their enrolled school days.

For 2020-21 Regular Attenders data please visit:

[www.oregon.gov/ode/schools-and-districts/reportcards/reportcards/Pages/Regular-Attenders-2021.aspx](http://www.oregon.gov/ode/schools-and-districts/reportcards/reportcards/Pages/Regular-Attenders-2021.aspx)

#### MATHEMATICS

Students meeting state grade-level expectations.

For 2020-21 Mathematics data please visit:

[www.oregon.gov/ode/schools-and-districts/reportcards/reportcards/Pages/Statewide-Assessment-Results-2021.aspx](http://www.oregon.gov/ode/schools-and-districts/reportcards/reportcards/Pages/Statewide-Assessment-Results-2021.aspx)

### Academic Progress

#### INDIVIDUAL STUDENT PROGRESS

Year-to-year progress in English language arts and mathematics.

Data not available in 2020-21

#### SCIENCE

Students meeting state grade-level expectations.

For 2020-21 Science data please visit:

[www.oregon.gov/ode/schools-and-districts/reportcards/reportcards/Pages/Statewide-Assessment-Results-2021.aspx](http://www.oregon.gov/ode/schools-and-districts/reportcards/reportcards/Pages/Statewide-Assessment-Results-2021.aspx)

### School Goals

After the very difficult past year, our school is focused on two areas; help all students make up as much lost or incomplete learning as possible, and to meet the social and emotional needs of all students. We will strive to provide our students a safe, stable and caring environment where students can grow and learn academically, socially and emotionally.

### State Goals

The Oregon Department of Education is partnering with school districts and local communities to ensure a 90% on-time, four year graduation rate by 2025. To progress toward this goal, the state will prioritize efforts to improve attendance, provide a well-rounded education, invest in implementing culturally responsive practices, and promote continuous improvement to close opportunity and achievement gaps for historically and currently underserved students.

### Safe & Welcoming Environment

Our school strives to ensure all students and their parents feel welcome by being greeted by a warm friendly office staff. We have added Umatilla and Weyilletpuu translations to most areas of our school in recognition of our Native American students and their families. We keep our school clean and our customer service at the top of our priority list. Our school is also equipped with modern safety features which help us keep our students and staff safe each and every day.



# OREGON AT-A-GLANCE SCHOOL PROFILE CONTINUED

## Washington Elementary School



### Outcomes

#### Our Staff (rounded FTE)



**23**

Teachers



**14**

Educational assistants



**2**

Counselors/  
Psychologists



**81%**

Average teacher retention rate



**63%**

% of licensed teachers with more than 3 years of experience



**Yes**

Same principal in the last 3 years

	REGULAR ATTENDERS	ENGLISH LANGUAGE ARTS	MATHEMATICS
American Indian/Alaska Native			
Asian			
Black/African American			
Hispanic/Latino			
Multiracial			
Native Hawaiian/Pacific Islander			
White			
Free/Reduced Price Lunch			
Ever English Learner			
Students with Disabilities			
Migrant			
Homeless			
Talented and Gifted			
Female			
Male			
Non-Binary			

### About Our School

#### BULLYING, HARASSMENT, AND SAFETY POLICIES

To ensure a safe and secure learning environment for all of our students, our school child development specialist provides lessons to students and staff about recognizing, addressing, and preventing bullying and harassment behavior. We also have the SafeOregon anonymous reporting line/email available to students and parents which can be found on our school website. We have an annual character education assembly which also addresses bullying and harassment prevention for our school. Our staff continually work with students and parents on a case-by-case basis to address conflict between students and to provide counseling to learn how to respectfully treat others.

#### EXTRACURRICULAR ACTIVITIES

Our school offers several extracurricular activities:

- Strong PE and Music programs
- Partnership with community for local athletic and art programs
- Family enrichment nights
- Cultural events

#### PARENT ENGAGEMENT

Our school strives to engage all of our parents by providing language supports for parents where English is their second language. Our school holds a yearly Native American Pow Wow led by our students as well as a literacy night where parents are welcome to attend. We also have many parent volunteers who assist teachers in their classrooms on a daily basis.

#### COMMUNITY ENGAGEMENT

We partner with the local community to provide students with learning opportunities:

- Local Museums (Tamastlikt Cultural Institute, Oregon Trail Interpretive Center, Baker County Museum, Pendleton Heritage Station)
- Tours and events at BMCC
- Watershed Field Day

Each year we hold our winter coat drive as well as an annual food drive to connect our students and community by working together to provide for families in need.