
Pendleton School District

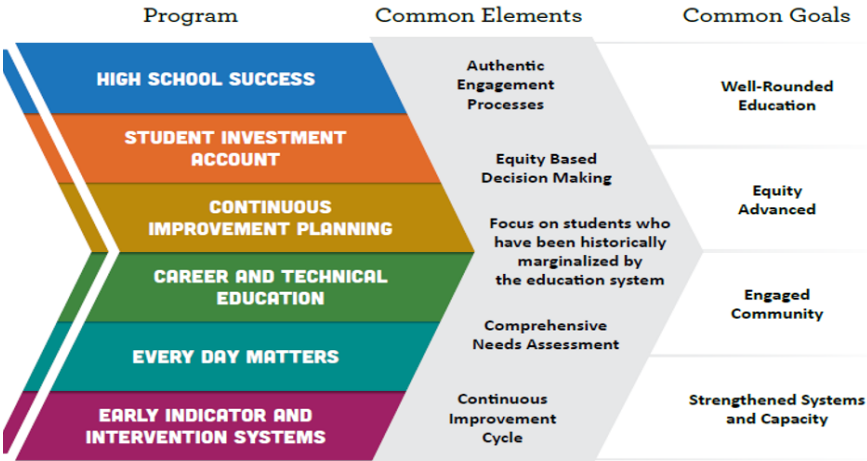
Integrated Plan

What?

This **Integrated Plan** is the product of an extensive, ongoing process that elevates community feedback and a comprehensive needs assessment to guide our implementation of state and federal initiatives and investments of these critical funds over the next four years.

Why?

ODE's **Application Process** was designed in response to requests from educational leaders and state legislators to *combine 6 separate program requirements and common goals into one plan* and create an accountability framework for measuring progress over time.



How?

Our planning team has spent months gathering feedback from our stakeholders (students, families, community and staff) and reviewing data to assess district strengths and challenges, with a focus on ensuring all voices are represented and that plan priorities address the opportunity or achievement gaps that persist in our system. The result of this work is summarized in our **Plan Snapshot**.

Once ODE has approved our plan, they will co-draft longitudinal performance growth targets for our student populations. We will provide quarterly financial and progress reports and an annual performance review. Additionally, we will sustain and grow our engagement efforts to strengthen the implementation of this plan through partnerships.

2023-2027 Integrated Plan Snapshot



Our intended outcomes are:

1. Increase academic achievement and reduce academic disparities for our focal groups identified through our needs assessment (Students who experience disability, Emerging Bilingual and English Learning students, Native American students, students experiencing economic disadvantage, and Latinx)
2. Ensure a climate and culture of safety and well-being for all students.
3. Enhance and expand innovating and emerging practices in education to better meet the needs of students historically marginalized in educational institutions.

These key strategies will help us achieve our intended outcomes:

- Develop and implement a robust system for monitoring and improving Freshman on track for graduation and enrollment of underserved students in career related learning opportunities.
- Reduce class sizes K-3 to promote evidence based practices for Early literacy and Numeracy (3rd grade reading).
- Increase instruction and social emotional support for focal groups through intervention specialists, additional instructional assistants, behavior support specialists, special education teachers and other personnel.
- Refine and implement systems to monitor and promote regular school attendance.
- Improve school safety through key partnerships and investments in staff, programs and professional development.
- Identify and expand existing and promising practices to support culturally responsive practices and instruction for our focal groups.

Key investments for the upcoming biennium include:

- Hire student support staff, including a Drop Out Prevention Coordinator, Student and Family Liaison, credit retrieval support employee, additional paraprofessionals at all levels, and elementary Behavior Support Specialists.
- Hire an elementary and secondary SPED teacher.
- Hire elementary and secondary math and reading intervention specialists.
- Fund expansion of summer school programs for grades 8-12.
- Hire an elementary English Language Development Paraprofessional.

- Hire an additional Middle School Counselor.
- Hire a middle school Dean of Students.
- Partner with Pendleton Police Department to provide a School Resource Officer.
- Provide additional support for the CARE program.
- Fund extra duty compensation for additional CTE courses and learning opportunities.
- Fund extra duty compensation for Robotics.
- Hire a middle school food industry instructor.
- Hire an elementary Heritage Language teacher
- Hire an ASPIRE Coordinator.
- Partner with BMCC to provide a Next Step Navigator to support students in their post-secondary transition.
- Increase dual credit offerings and work-related learning experiences through our Success 201 program.
- Fund events that partner community and school, such as the HS Family Forecasting night.

Total Preliminary Funding = \$6,319,523

Questions & Comments?

For more information, the full plan can be found on our website:

<https://pendleton.k12.or.us/integrated-plan/>

To provide feedback on this plan and/or if you would like to be involved in future stakeholder engagement, please contact Superintendent Kevin Headings at kheadings@pendletonsd.org